

## Rooftop Support Systems

a division of Eberl Iron Works, Inc.  
128 Sycamore Street  
Buffalo, New York 14204



(888) 243-2669



RTS@eberliron.com

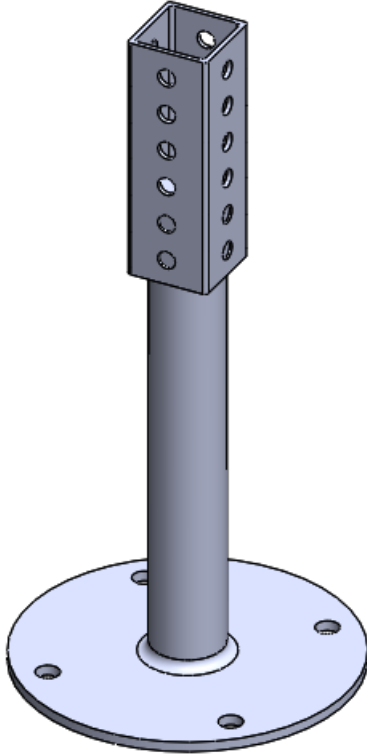


rooftopsupportsystems.com



# RTSSPB20HG

## PRODUCT SUBMITTAL SHEET



## Installation

1. Place base on roof based on design layout
2. Cut roofing membrane and insulation to expose structure
3. Bolt base to structure using appropriate fastener
4. Waterproof roofing penetration with flashing or a pitch-pocket
5. Insert strut component of support into 2 in x 2 in receiver
6. Secure with provided 3/8 in channel nut and bolt (1) ea

## Description

Direct Mount tie down for use in H-Stands, Equipment Supports, Crossover Units, and Access Platforms.

## Product Information

**Base Material:** Solid Steel

**Base Dimensions:** 8 in Diameter x 16 in (or 28 in)

**Clearance:** Minimum mounting height of +/- 20 in above structure with 16 in version

**Maximum Load Weight:** Determined by roof loading capacity

**Steel Component:** 2 in x 2 in square steel tube, welded to a 12 in (or 24 in) x 1-3/4 in solid round bar, welded to an 8 in diameter x 1/4 in thick plate

**Steel Component Finish:** Hot Dip Galvanized (ASTM 123)

**Hardware Finish:** Electro-Galvanized (ASTM B633) or 304 Stainless Steel

## Spacing:

Horizontal support spacing according to pipe specification, or horizontal pipe support spacing according to applicable building code. Do not exceed manufacturer's suggested spacing of 8-foot centers as loading permits.

Quantity:

Contractor:

Project:

