

Rooftop Support Systems

a division of Eberl Iron Works, Inc.
128 Sycamore Steet
Buffalo, New York 14204



(888) 243-2669



RTS@eberliron.com

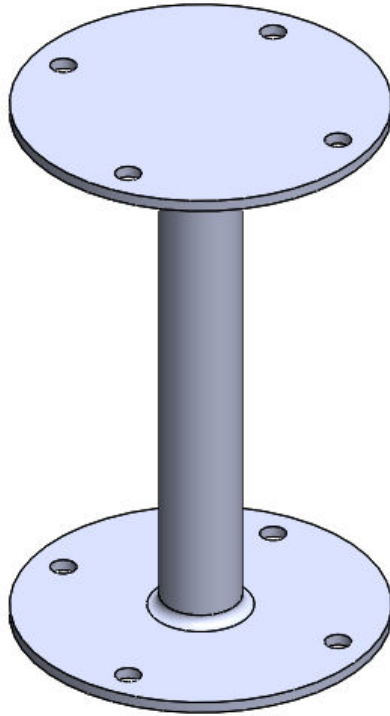


rooftopsupportsystems.com



RTSSPBWIND

PRODUCT SUBMITTAL SHEET



Installation

1. Place base on roof based on design layout
2. Cut roofing membrane and insulation to expose structure
3. Bolt base to structure using appropriate fastener
4. Waterproof roofing penetration with flashing or a pitch-pocket
5. Lash to framing of support using appropriately sized cable (by others)

Description

Direct Mount tie down for use in H-Stands, Equipment Supports, Crossover Units, and Access Platforms to combat wind forces.

Product Information

Base Material: Solid Steel

Base Dimensions: 8 in Diameter x 12-1/2 in (or 24-1/2 in)

Clearance: Minimum mounting height of +/- 12-1/2 in above structure with 12 in version

Maximum Load Weight: Determined by roof loading capacity

Steel Component: 12 in (or 24 in) x 1-3/4 in solid round bar, welded to (2) 8 in diameter x 1/4 in thick plates

Steel Component Finish: Hot Dip Galvanized (ASTM 123)

Spacing:

Horizontal support spacing according to pipe specification, or horizontal pipe support spacing according to applicable building code. Do not exceed manufacturer's suggested spacing of 8-foot centers as loading permits.

Quantity:

Contractor:

Project:

