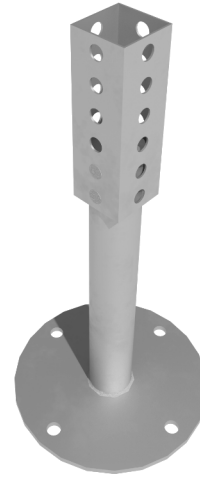


Contractor: _____**Project:** _____

RTSSPB20HG



Direct Mount base for use in H-Stands, Equipment supports, Crossover units, and Access Platforms.

Base Material: Solid Steel.

Base Dimensions: 8" Diameter x [16"] or [28"] .

Clearance: Minimum mount height of +/-20" above structure with 12" version.

Maximum Load Weight: Based on structural capacity of roof substructure.

Steel Component: 2" x 2" 12 gauge square steel tube welded to a [12"] or [24"] 1-3/4" solid round bar welded to an 8"D 1/4" plate.

Steel finish: [Hot Dip Galvanized].

Hardware finish: [Electrogalvanized] or [Stainless Steel].

Spacing: Horizontal support spacing according to pipe specification, or horizontal pipe support spacing according to applicable building code. Do not exceed manufacturer's suggested spacing of 8-foot centers as loading permits.

Installation Instructions:

1. Place base on roof based on design layout.
2. Cut roofing membrane and insulation to expose structure.
3. Bolt base to structure using appropriate fastener.
4. Waterproof roofing penetration with flashing or a pitch-pocket.
5. Insert strut component of support into 2" x 2" receiver.
6. Secure with provided 3/8" channel nut and bolt. (1) ea.

