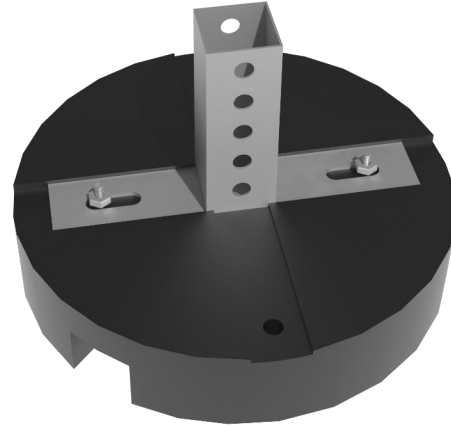


**Contractor:** \_\_\_\_\_**Project:** \_\_\_\_\_

# RTSPUCF11



Non-penetrating rubber base for use in small H-Stands and Equipment supports

**Base Material:** Compression molded recycled rubber (97% recycled material).

**Base Dimensions:** 12-inch Diameter. 71.5 in<sup>2</sup> surface contact.

**Pipe Clearance:** Fixed height of 3-5/8 inches.

**Maximum Load Weight:** Based on structural capacity of structure:

140 lbs. at 2 PSI, 210 lbs. at 3 PSI (per pipe support)

**Steel Component:** 2" x 2" 12 gauge square steel tube welded to a 10" 10 gauge steel plate.

**Steel finish:** Hot Dip Galvanized.

**Hardware finish:** [Electrogalvanized] or [Stainless Steel].

**Spacing:** Horizontal support spacing according to pipe specification, or horizontal pipe support spacing according to applicable building code. Do not exceed manufacturer's suggested spacing of 8-foot centers as loading permits.

---

## Installation Instructions:

1. Place base on roof based on design layout.
2. Insert strut component of support into 2" x 2" receiver.
3. Secure with provided 3/8" channel nut and bolt. (1) ea.

\*\*\*\*NOTE: No adhesive is to be used with this product to attach to the roof.

