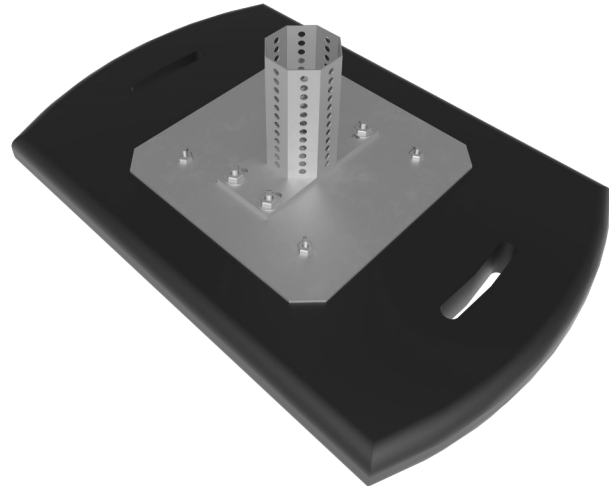


Contractor: _____**Project:** _____

RTSF30F



Non-penetrating rubber base for use in Heavy Duty H-Stands, Equipment supports, Crossover units, and Access Platforms. Compatible *only* with the Sikla Framo 80 framing product.

Base Material: Compression molded recycled rubber (97% recycled material).

Base Dimensions: 17-1/4" x 26-1/4". 307-1/4 in² surface contact.

Clearance: Minimum mount height of +/-13".

Maximum Load Weight: Based on structural capacity of structure:

610 lbs. at 2 PSI, 915 lbs. at 3 PSI (per base)

Steel Component: Sikla fitting bolted to a 12" x 12" 10 gauge steel plate.

Steel finish: [Pregalvanized], [Hot Dip Galvanized] or [Stainless Steel].

Hardware finish: [Electrogalvanized] or [Stainless Steel].

Spacing: Horizontal support spacing according to pipe specification, or horizontal pipe support spacing according to applicable building code. Do not exceed manufacturer's suggested spacing of 8-foot centers as loading permits.

Installation Instructions:

1. Place base on roof based on design layout.
2. Insert beam component of support onto receiver fitting.
3. Secure with provided self forming screws. (4) ea.

****NOTE: No adhesive is to be used with this product to attach to the roof.

