

Rooftop Support Systems

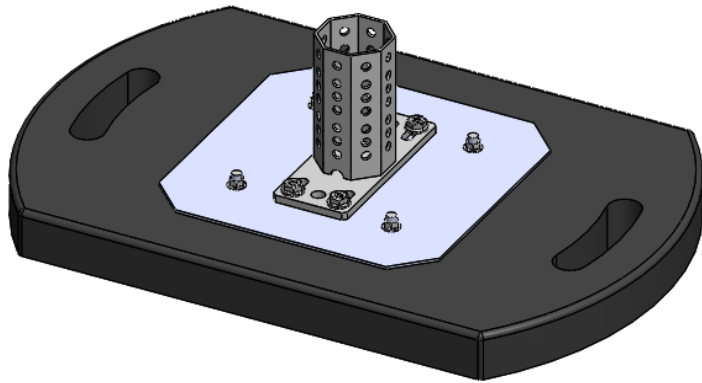
a division of Eberl Iron Works, Inc.
128 Sycamore Steet
Buffalo, New York 14204

(888) 243-2669
RTS@eberliron.com
rooftopsupportsystems.com



RTSF30F

PRODUCT SUBMITTAL SHEET



Installation

1. Place base on roof based on design layout
2. Insert beam component of support into receiver fitting
3. Secure with provided self forming screws (4) ea

NOTE*

No adhesive is to be used with this product to attach to the roof

Description

Non-penetrating rubber base for use in Heavy Duty H-Stands, Equipment Supports, Crossover Units, and Access Platforms. Compatible only with the Sikla Framo 80 framing product.

Product Information

Base Material: Compression molded recycled rubber (97% recycled material)

Base Weight: 38 lbs

Base Dimensions: 17-1/4 in x 26-1/4 in, 307-1/4 in² surface contact

Pipe Clearance: Minimum height of +/- 13 in

Maximum Load Weight: 610 lbs at 2 PSI, 915 lbs at 3 PSI (per support)
(Determined by roof loading capacity)

Steel Component: Sikla fitting bolted to a 12 in x 12 in, 10 gauge steel plate

Steel Component Finish: Pre-Galvanized (ASTM 653), Hot Dip Galvanized (ASTM 123), or 304 Stainless Steel

Hardware Finish: Electro-Galvanized (ASTM B633) or 304 Stainless Steel

Spacing:

Horizontal support spacing according to pipe specification, or horizontal pipe support spacing according to applicable building code. Do not exceed manufacturer's suggested spacing of 8-foot centers as loading permits.

Quantity:

Contractor:

Project:

