

Rooftop Support Systems

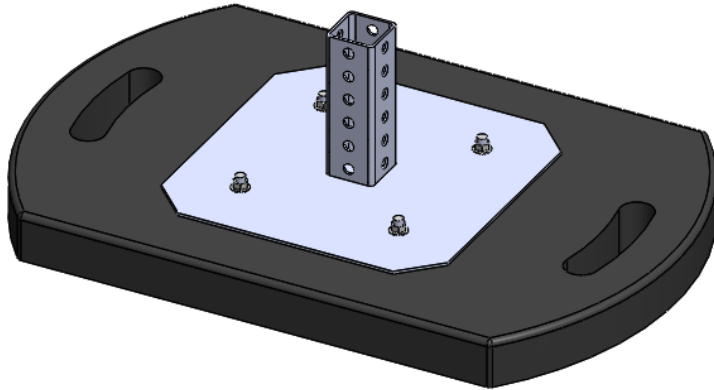
a division of Eberl Iron Works, Inc.
128 Sycamore Steet
Buffalo, New York 14204

(888) 243-2669
RTS@eberliron.com
rooftopsupportsystems.com



RTSF30

PRODUCT SUBMITTAL SHEET



Installation

1. Place base on roof based on design layout
2. Insert strut component of support into 2 in x 2 in receiver
3. Secure with provided 3/8 in channel nut and bolt (1) ea

NOTE*

No adhesive is to be used with this product to attach to the roof

Description

Non-penetrating pipe support for use in H-Stands, Equipment Supports, Crossover Units, and Access Platforms.

Product Information

Base Material: Compression molded recycled rubber (97% recycled material)

Base Weight: 38 lbs

Base Dimensions: 17-1/4 in x 26-1/4 in, 307-1/4 in² surface contact

Pipe Clearance: Minimum height of +/- 13 in

Maximum Load Weight: 610 lbs at 2 PSI, 915 lbs at 3 PSI (per support)
(Determined by roof loading capacity)

Steel Component: 2 in x 2 in, 12 gauge square steel tube welded to a 12 in x 6 in, 10 gauge steel plate

Steel Component Finish: Hot Dip Galvanized (ASTM 123), or 304 Stainless Steel

Hardware Finish: Electro-Galvanized (ASTM B633) or 304 Stainless Steel

Spacing:

Horizontal support spacing according to pipe specification, or horizontal pipe support spacing according to applicable building code. Do not exceed manufacturer's suggested spacing of 8-foot centers as loading permits.

Quantity:

Contractor:

Project:

