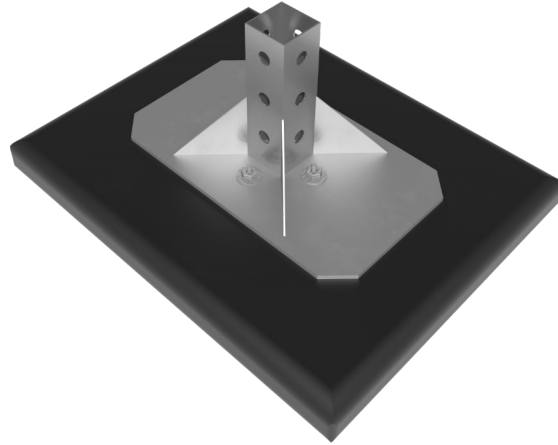


Contractor: _____**Project:** _____

RTSF21G



Non-penetrating rubber base for use in H-Stands, Equipment supports, Crossover units, and Access Platforms.

Base Material: Compression molded recycled rubber (97% recycled material).

Base Dimensions: 14-1/2" x 17-1/2". 211-3/4 in² surface contact.

Clearance: Minimum mount height of +/-13".

Maximum Load Weight: Based on structural capacity of structure:

420 lbs. at 2 PSI, 635 lbs. at 3 PSI (per base)

Steel Component: 2" x 2" 12 gauge square steel tube welded to a 12" x 6" 10 gauge steel plate and gussets.

Steel finish: [Hot Dip Galvanized] or [Stainless Steel].

Hardware finish: [Electrogalvanized] or [Stainless Steel].

Spacing: Horizontal support spacing according to pipe specification, or horizontal pipe support spacing according to applicable building code. Do not exceed manufacturer's suggested spacing of 8-foot centers as loading permits.

Installation Instructions:

1. Place base on roof based on design layout.
2. Insert strut component of support into 2" x 2" receiver.
3. Secure with provided 3/8" channel nut and bolt. (1) ea.

****NOTE: No adhesive is to be used with this product to attach to the roof.

