

Contractor: _____ **Project:** _____

RTSAP-CUSTOM Maintenance Platform

Quantity: _____

Access Platform designed to project requirements to allow access and maintenance to large HVAC units. Utilizes non-penetrating recycled rubber bases and 3” x 3” square tubular framing, and railings where required.

Compatible bases: [RTSF30F] or [RTSSPB80HG]

Maximum load: TBD based on load capacity of structure, number of bases, and framing design.

Framing: 3” x 3” Sikla Framo 80 Beam.

Framing finish: [Hot Dip Galvanized].

Railing and stair framing: 1-5/8” single or welded strut channel.

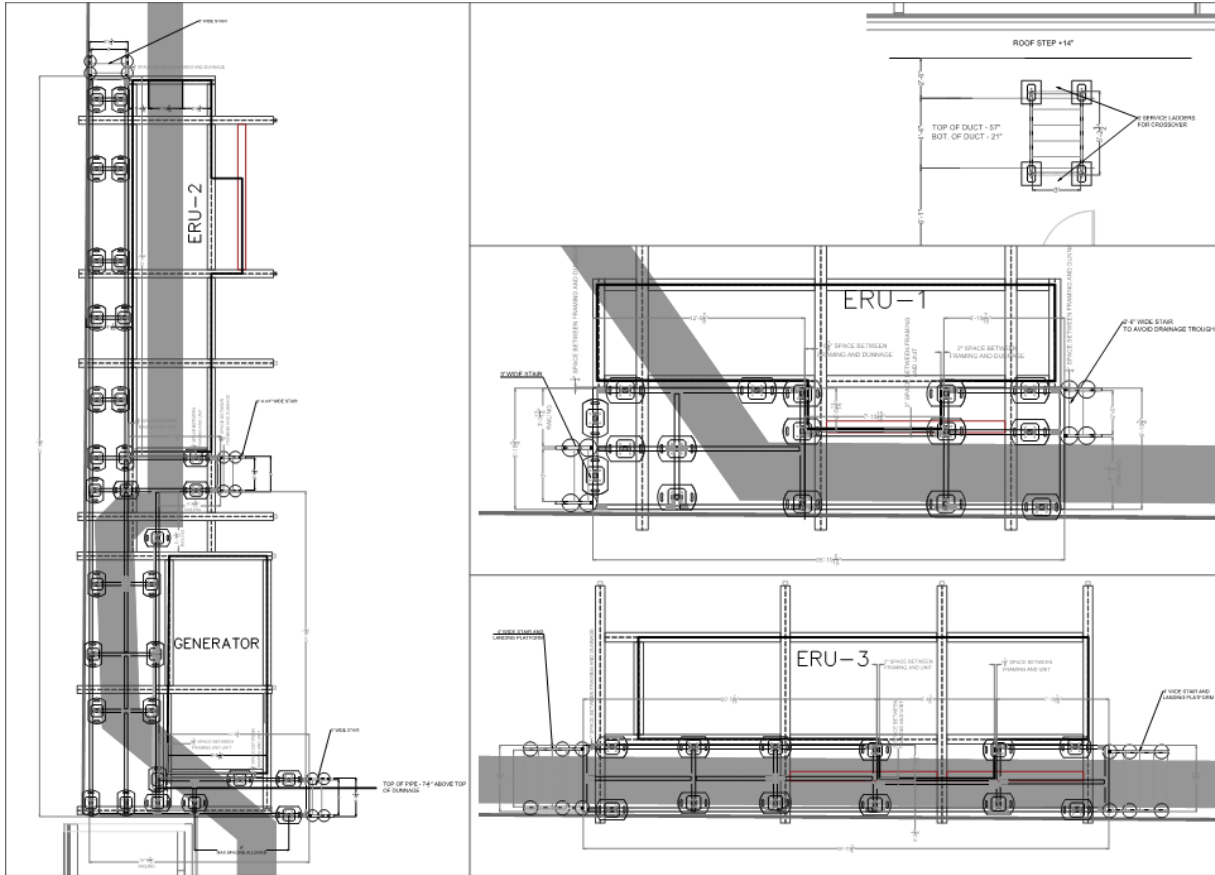
Grating: 11-3/4” and 9-1/2”W x 1-1/2”H 12 ga. anti-slip plank grating with 10 ga. carrier angles.

Railing and stair finish: [Pregalvanized] or [Hot Dip Galvanized]

Hardware finish: [Hot Dip Galvanized].

Installation Instructions:

- | | |
|--|--|
| <ol style="list-style-type: none"> 1. Place base on roof based on design layout. 2. Install platform columns by sliding onto receiver of base. Secure with galvanized self forming screws. 3. Connect platform columns with platform beams using “T” and “L” fittings where noted and (8) self forming screws at each connection. 4. Attach grating to framing using grating clip and associated hardware. | <ol style="list-style-type: none"> 5. Install welded 1-5/8” railing posts where required using railing bracket, self forming screws, and 1/2” channel but and bolt. 6. Attach railings to railing posts using “Z” fitting and 1/2” channel nut and bolt. Tightened all connections to 50 ft/lbs. 7. Attach stair assembly at location per instructions on RTSCO submittal. <p>NOTE: Specific installation drawings to be supplied at time of order.</p> |
|--|--|



Sample Project Drawings

